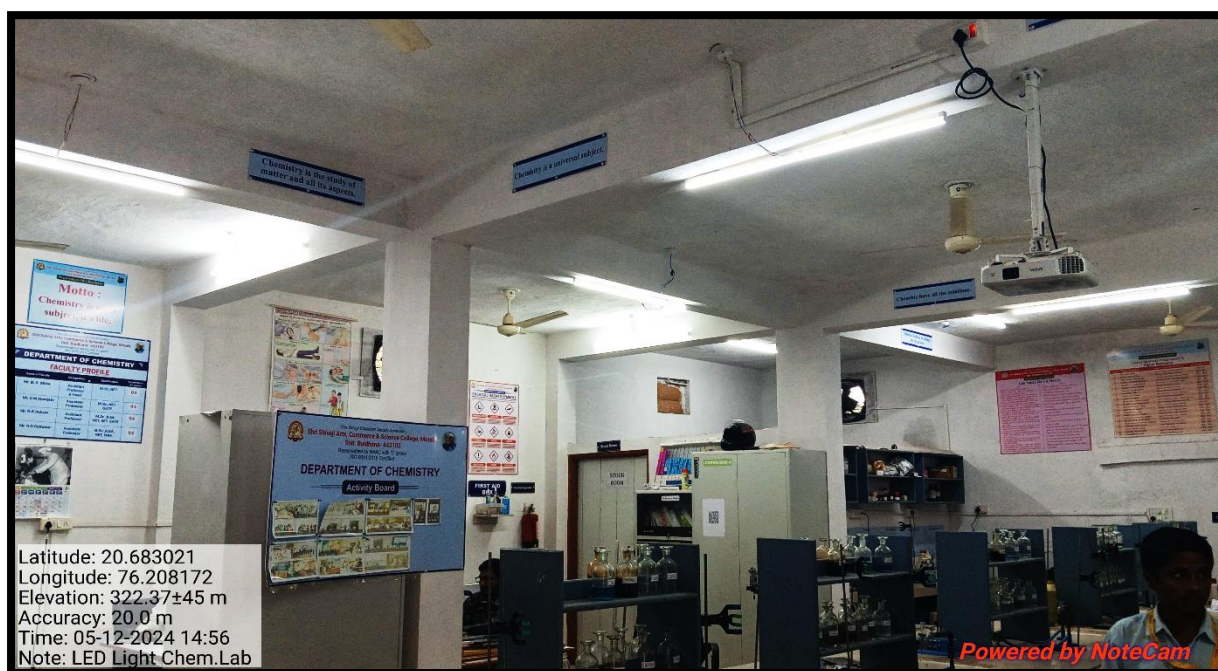
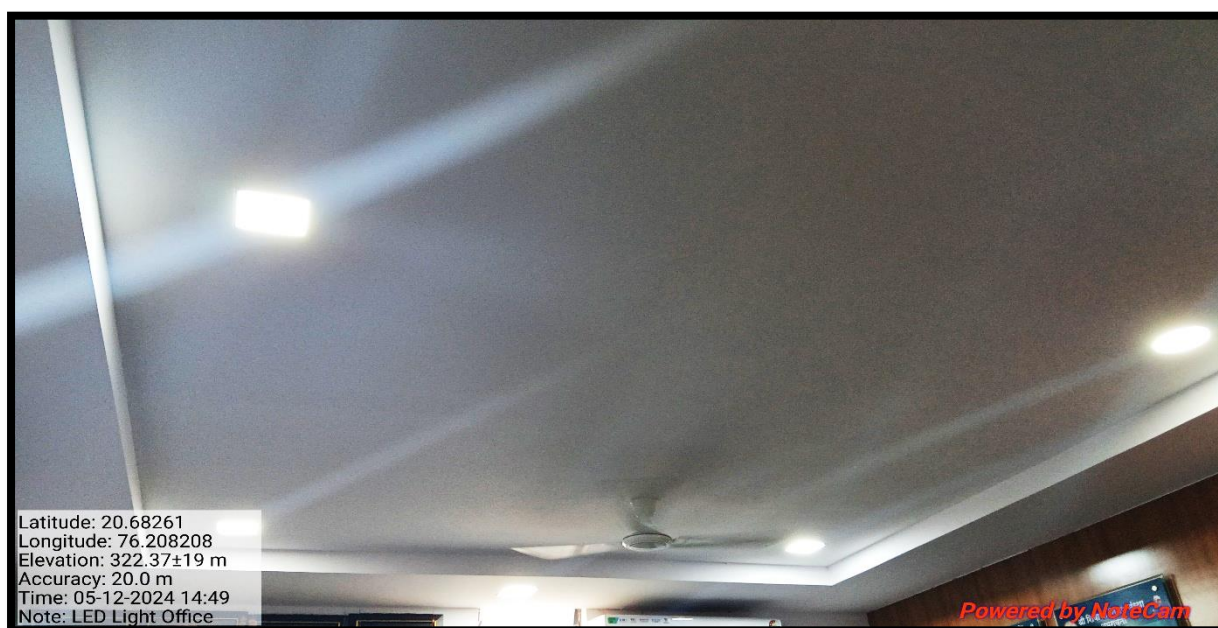


The Institution has facilities for alternate sources of energy and energy conservation measures

### 7.1.2 – Geotag Photographs:



7.1.2/1: Use of LED Light in Chemistry Laboratory



7.1.2/2: Use of LED Light in Administrative Office.

  
**A.S. Meherkar**  
IQAC CO-ORDINATOR  
Shri Shivaji Arts, Commerce  
and Science College, Motala



  
**Dr. G.N. Jadhao**  
Principal  
Shri Shivaji Arts, Commerce  
& Science College Motala,  
Distt. Buldhana

The Institution has facilities for alternate sources of energy and energy conservation measures



### 7.1.2/3: Use of LED Light in Administrative Office.

  
**A.S. Meherkar**  
IQAC CO-ORDINATOR  
Shri Shivaji Arts, Commerce  
and Science College, Motala



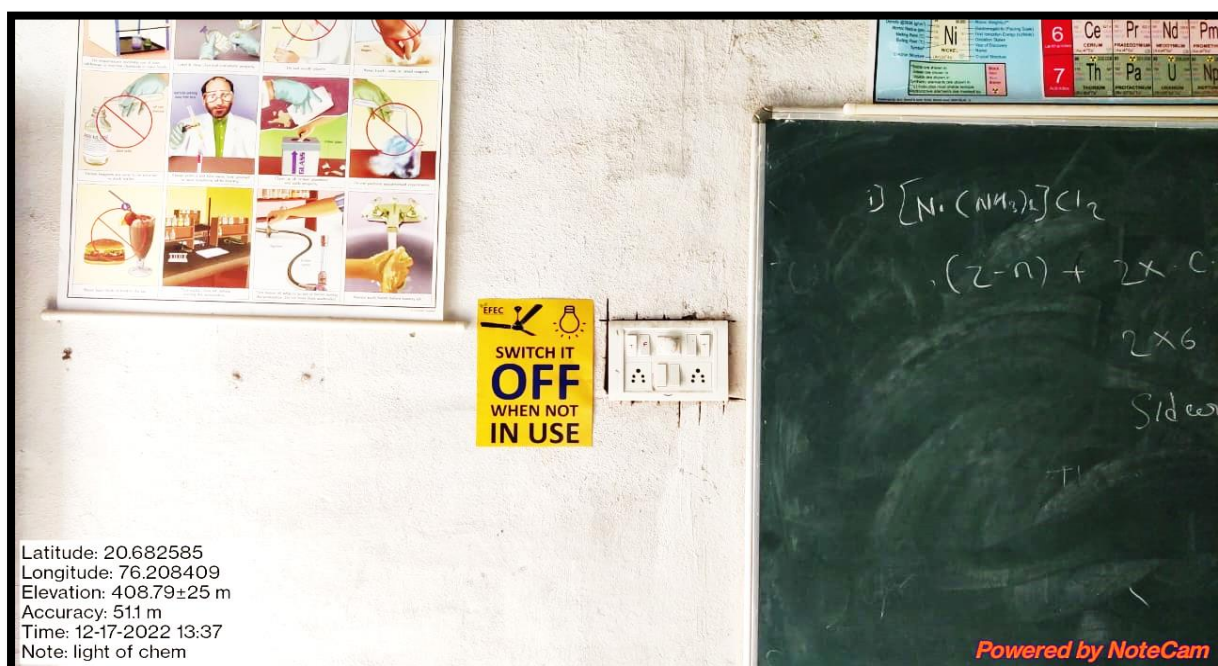
  
**Dr. G.N. Jadhao**  
Principal  
Shri Shivaji Arts, Commerce  
& Science College Motala,  
Dist. Buldhana



The Institution has facilities for alternate sources of energy and energy conservation measures



7.1.2/4: Use of LED Light in Class room.



7.1.2/5: Save energy Tips in all Departments

  
**A.S. Meherkar**  
IQAC CO-ORDINATOR  
Shri Shivaji Arts, Commerce  
and Science College, Motala



  
**Dr. G.N. Jadhao**  
Principal  
Shri Shivaji Arts, Commerce  
& Science College Motala,  
Dist. Buldhana

The Institution has facilities for alternate sources of energy and energy conservation measures



7.1.2/6: Save energy Tips



7.1.2/7: Solar Panel of 5 KW Install at College

  
**A.S. Meherkar**  
IQAC CO-ORDINATOR  
Shri Shivaji Arts, Commerce  
and Science College, Motala



  
**Dr. G.N. Jadhao**  
Principal  
Shri Shivaji Arts, Commerce  
& Science College Motala,  
Distt. Buldhana



The Institution has facilities for alternate sources of energy and energy conservation measures



7.1.2/8: Solar Power System

  
**A.S. Meherkar**  
IQAC CO-ORDINATOR  
Shri Shivaji Arts, Commerce  
and Science College, Motala



  
**Dr. G.N. Jadhao**  
Principal  
Shri Shivaji Arts, Commerce  
& Science College Motala,  
Dist. Buldhana